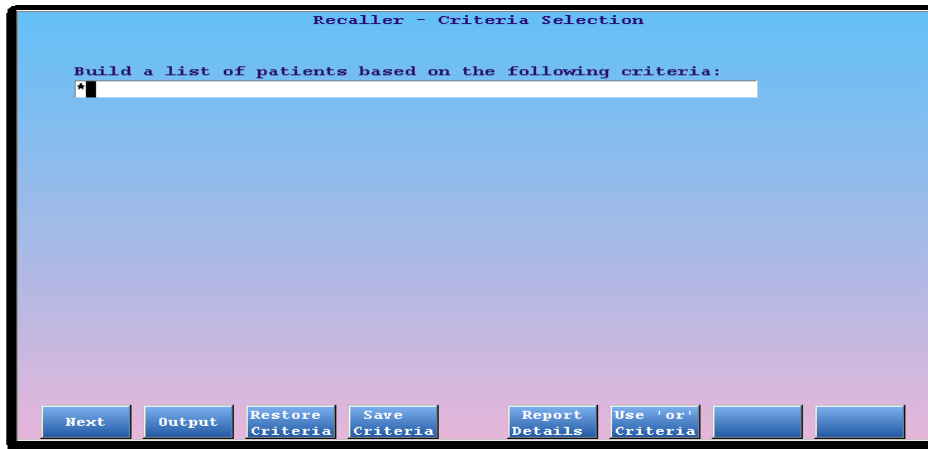


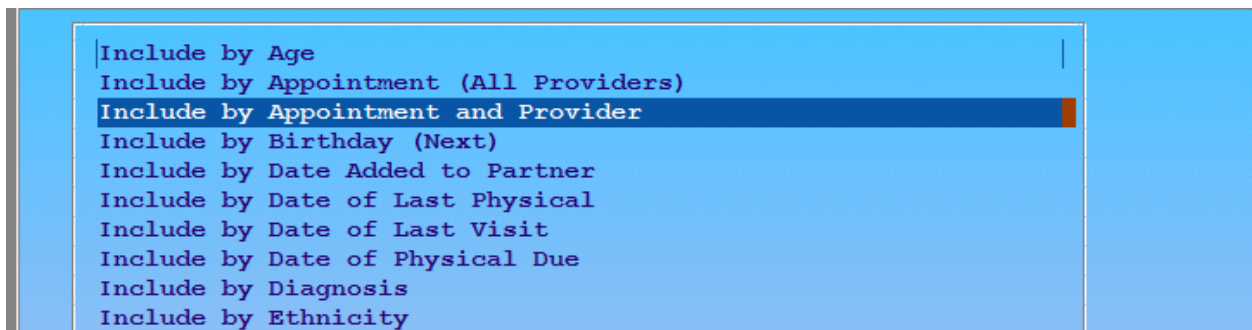
### Factor 3: Monitoring the percentage of patient visits with selected clinician or team

PCC clients should use the Partner `recaller` report to identify how many patients each clinician saw during a specified time period (the denominator) and, for those patients, how many currently have that person as the primary care clinician on file (the numerator).

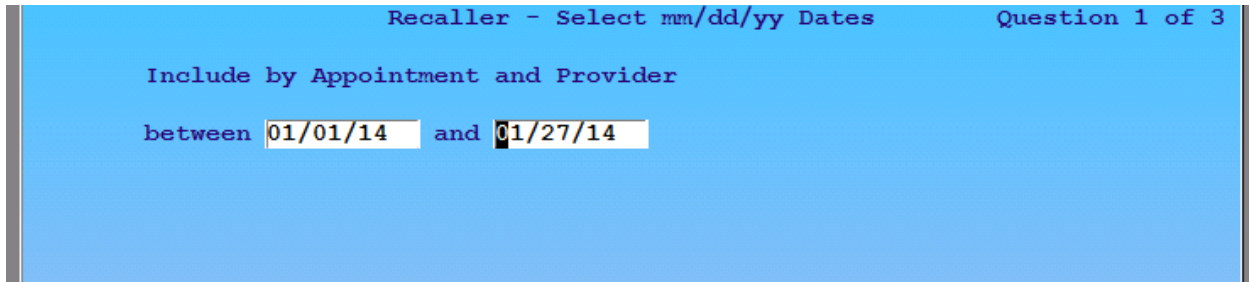
In the `recaller` report, the user would type an asterisk to view a list of valid restriction criteria.



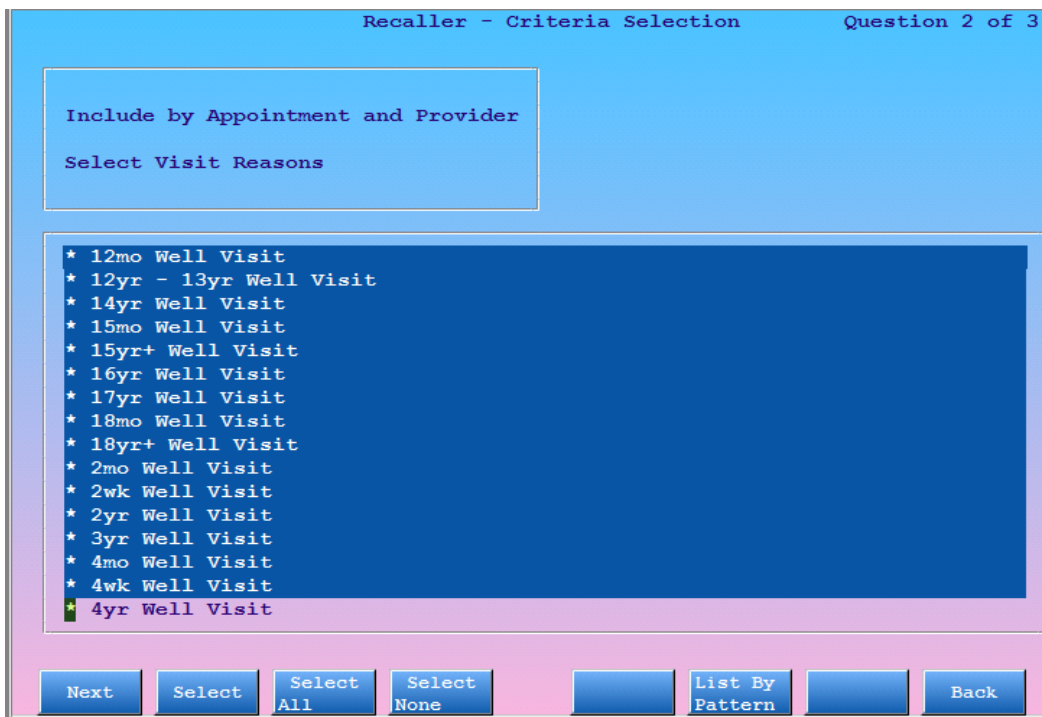
The list of valid restriction criteria will appear. The user would select “Include by Appointment and Provider”:



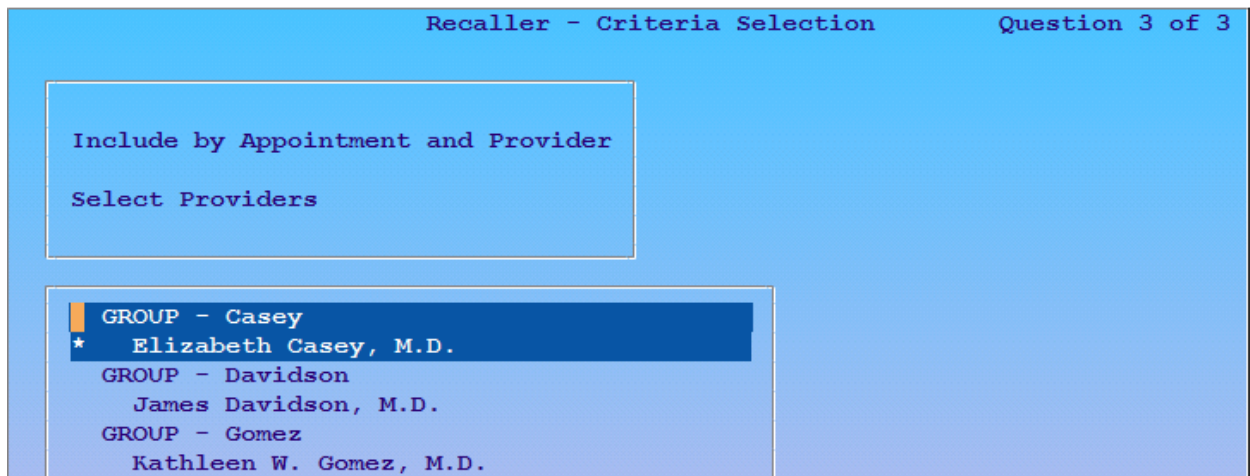
Then they would proceed, specifying a specific date range of past appointments making sure to enter at least one week's worth of appointments:



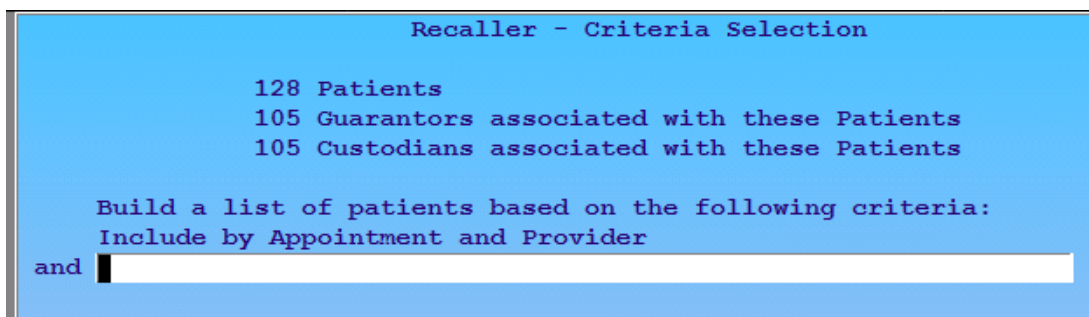
Next, the user will be prompted to select the relevant appointment types. Here, they would select all valid appointment reasons making sure to including both sick and well visit appointment types:



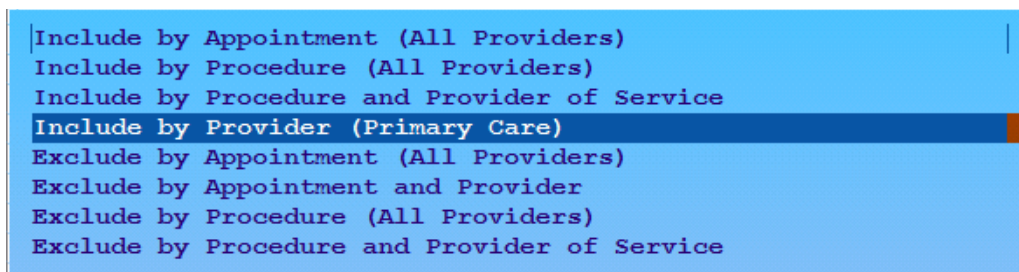
Finally, the user will be prompted to select an appointment provider where they will choose just one clinician who saw patients during the appointment date range specified earlier:



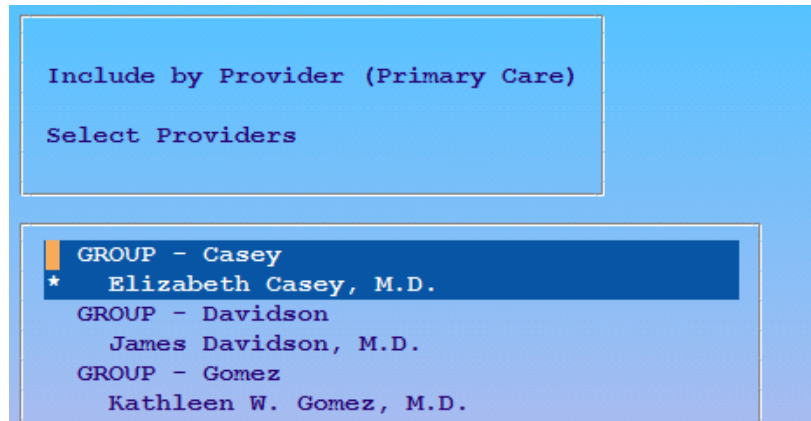
Once the appointment criteria is specified a count of patients will appear at the top indicating how many appointments the selected provider performed in the specified time period. In the example below, the 128 patients reported represents the denominator used for calculating the percentage for this measure:



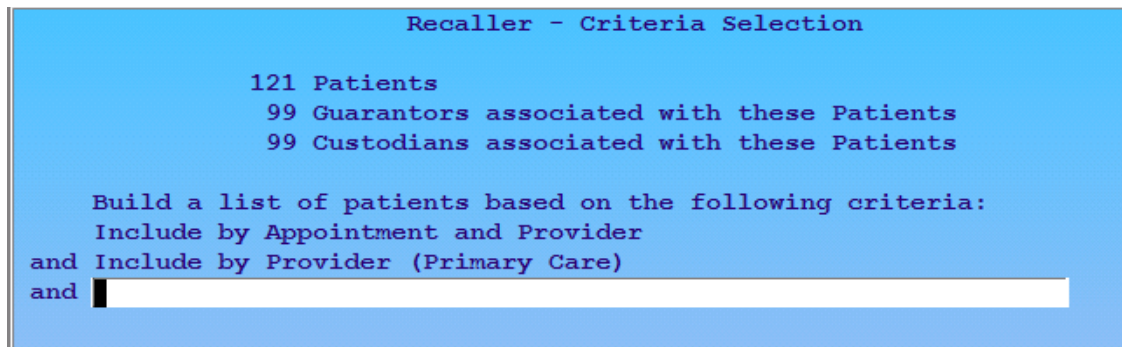
To get the numerator count, the user would add another criteria to include by primary care provider:



and select the same provider selected when prompted for appointments earlier:



The final output includes a count of patients seen by the selected provider in the specified time period who also have that same provider as the primary care provider on file. This represents the numerator for the measure:



So for our example, 121 out of 128 patients (94%) seen by Dr. Casey between 1/1/14 – 1/27/14 also have Dr. Casey as the primary care provider on file.

To get the percentages for the other clinicians, the same criteria would be processed, specifying the other clinicians as the appointment and primary care provider.